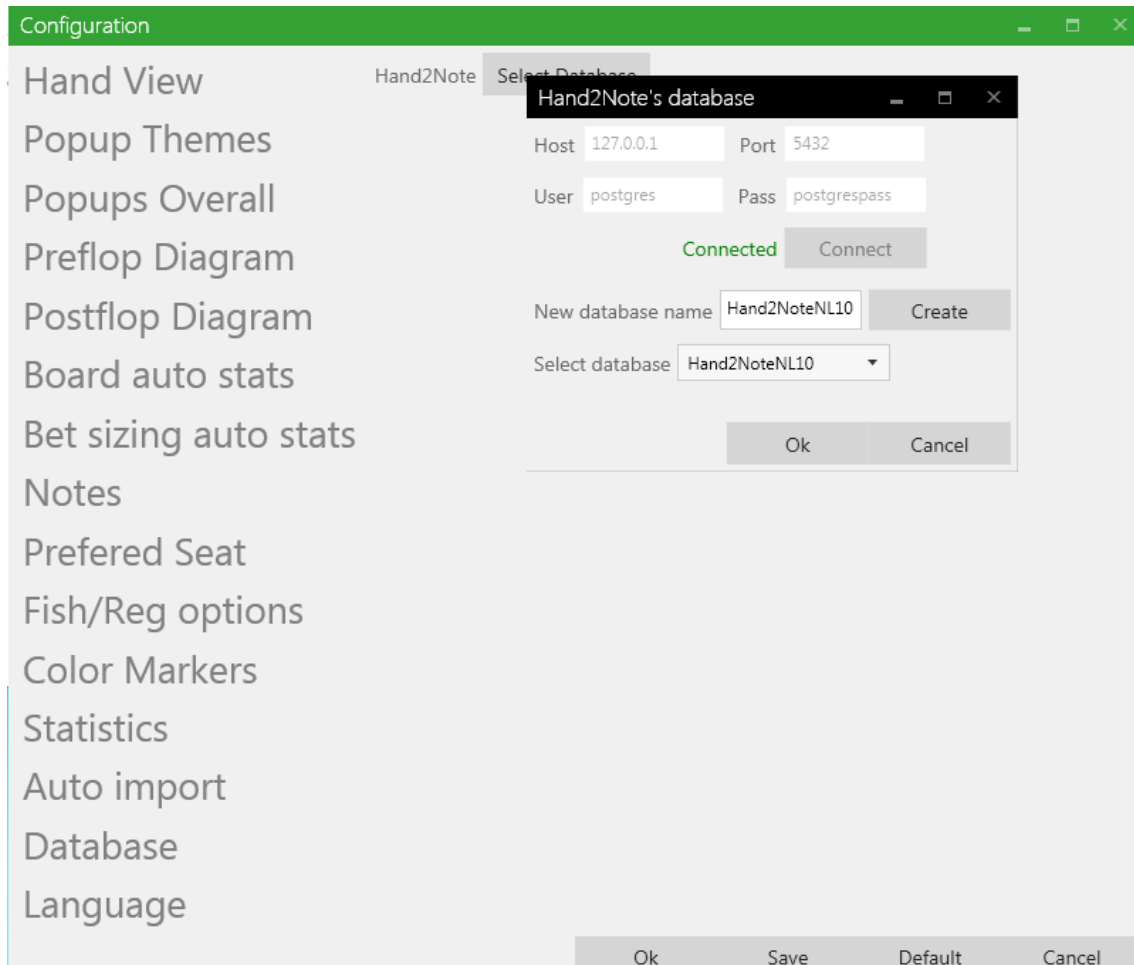
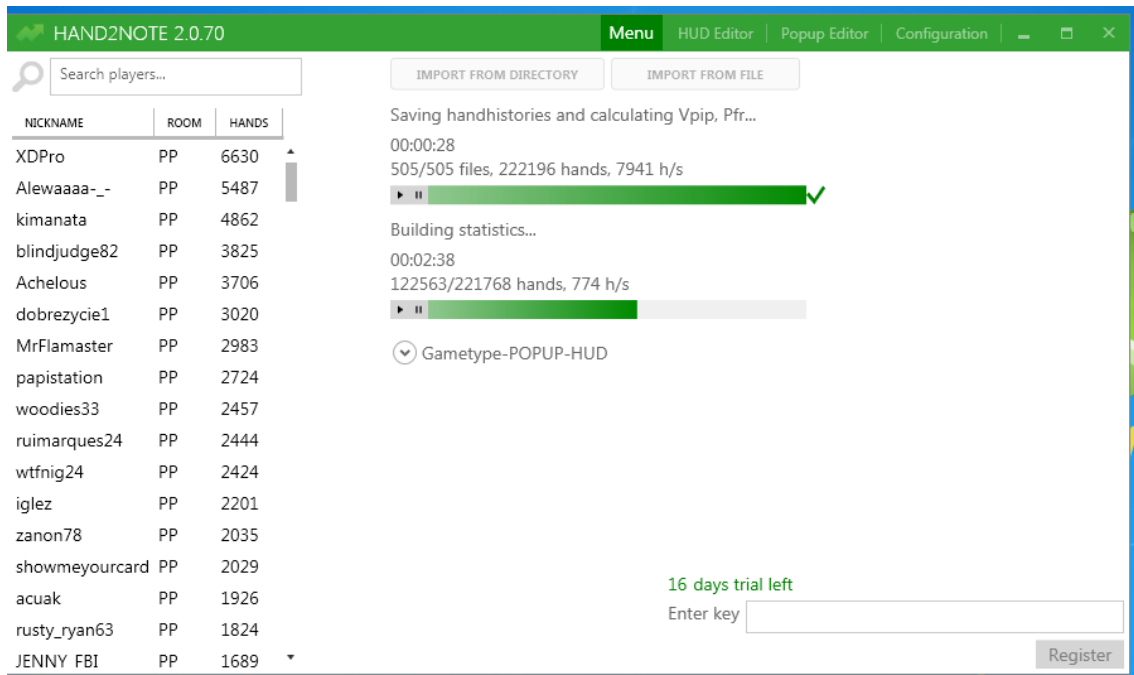


Configuration - Database

Se pone un nombre y pinchamos OK

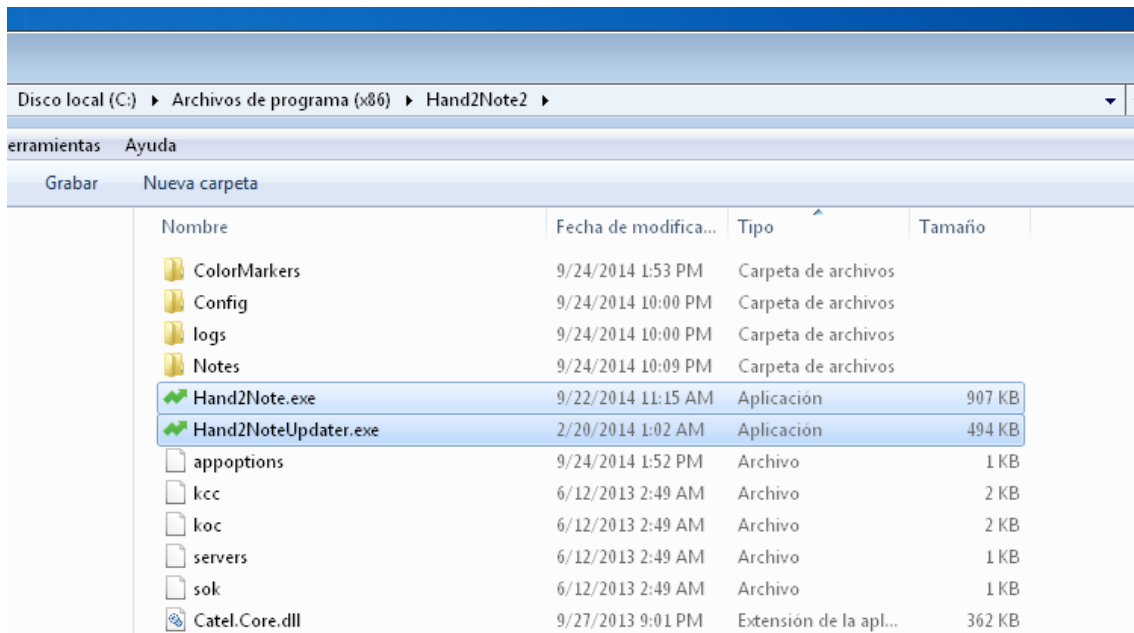


Aquí seleccioné IMPORT FROM DIRECTORY para importar unas manos de Datamining



Ir a C:\Program Files (x86)\Hand2Note2

Poner los .exe como administrador



Doble clic en un jugador

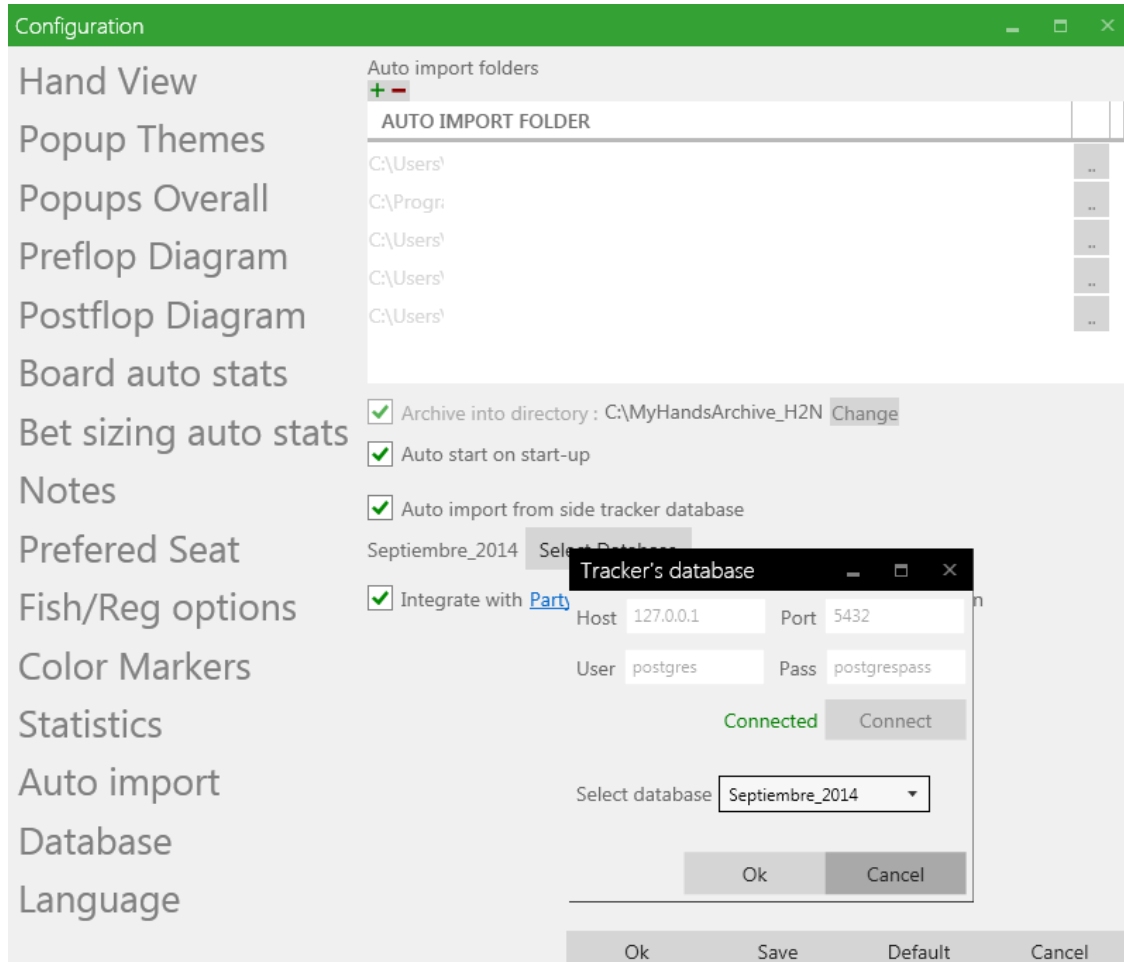
The screenshot shows the main interface of HAND2NOTE 2.0.70. On the left is a list of players with columns for Nickname, Room, and Hands. The main area displays a hand HUD for a game involving 'SBvHero's BB...'. It includes statistics for 'Raise 1st', 'vs 3bet', 'vs Raise', 'vs Squeeze', and 'vs Limp'. At the bottom, there is a hand diagram with cards and community cards (UTG 12, MP 15, CO 27, BTN 36, SB 24).

Aquí uso el programa como tracker. Está muy bien para el que no tenga dinero para comprar uno.

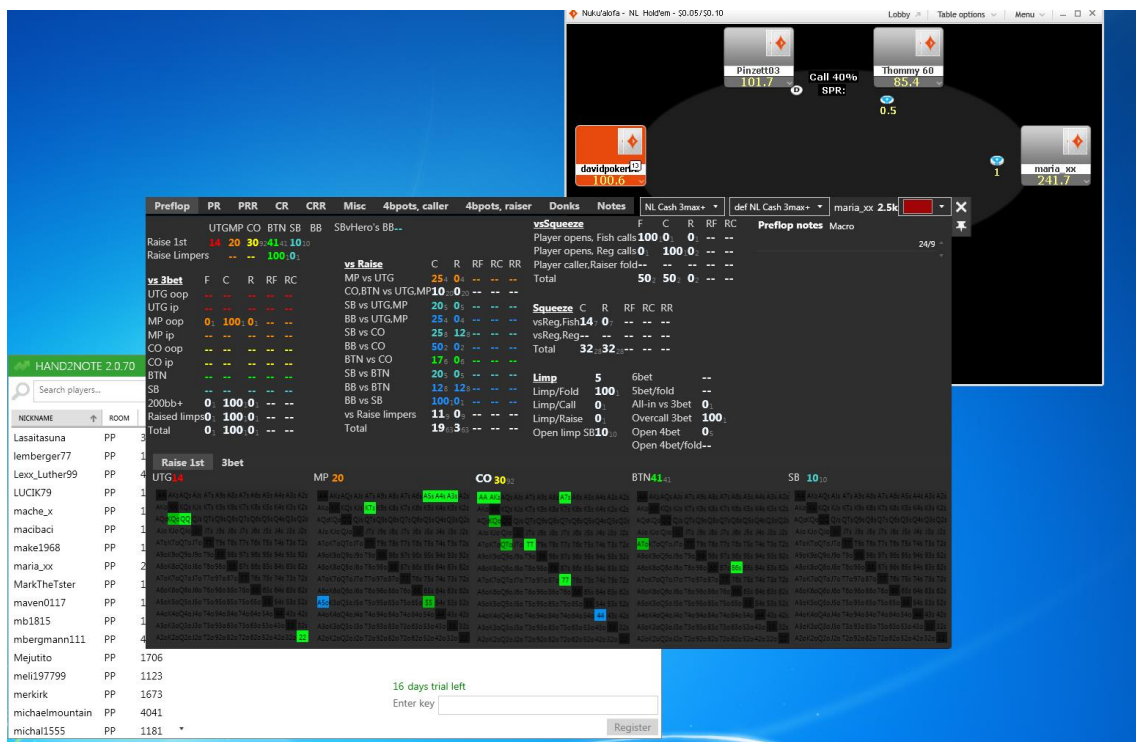
The screenshot shows the 'Configuration' window. On the left is a sidebar with menu items: Hand View, Popup Themes, Popups Overall, Preflop Diagram, Postflop Diagram, Board auto stats, Bet sizing auto stats, Notes, Preferred Seat, Fish/Reg options, Color Markers, Statistics, Auto import, Database, and Language. The main area is titled 'Auto import folders' and contains a table for 'AUTO IMPORT FOLDER' with columns for folder path and a selection button. Below the table are several checkboxes: 'Archive into directory: C:\MyHandsArchive_H2N' (checked), 'Auto start on start-up' (checked), 'Auto import from side tracker database' (unchecked), and 'Integrate with PartyCaption to enable dynamic HUD on Party, Bwin' (checked).

Aquí se marca "Autoimport from side tracker database" y escogemos una del HM ó PT.

Para usar simultáneamente con estos.



En el panel de la izquierda busco a maria_xx, antes de que llegue la ciega



Aquí ya se ve el HUD.

IMPORTANTE: Siendo BB ya veía las stats antes de tener que hablar. Esto no lo hace ni el HM2 ni el PT4 en las mesas normales de Party.

